

M I N A C O



# MINACO PROFILE

As part of the Luxembourg based Finstone Group's worldwide operations, Minaco (Pty) Ltd is a leading resource company for the processing and supply of natural stone to the building, construction and monumental industries. Minaco's depth of experience, specialised skills and ongoing technological advancement initiatives have placed it well to the fore of the industry, covering all aspects of processing from the sawing of rough blocks to the production of finished elements.

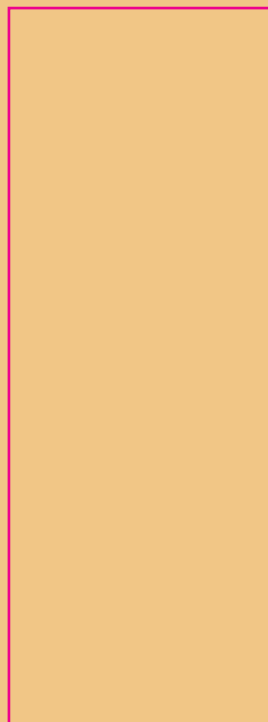
The contracting division within Minaco was originally formed following the consolidation of South Africa's two leading natural stone contracting companies, namely Marble Lime and Marble Pentelic. Both companies had operated independently and successfully for more than 40 years, bringing together a professional team of craftsmen with a wealth of knowledge in the design and application of natural stone products and exceptional contracting skills to complete the stonework on many prestigious buildings both locally and internationally. The incorporation of Minaco into the Finstone Group has provided the added advantage of direct global access to the Group's extensive worldwide resources of marble, granite and sandstone.

Minaco Contracts provides a service which is ideally suited to turnkey operations and offers cost-saving design input from concept to completion, advice on the suitability and availability of local and imported natural stone materials and guidance on installation, detailing and surface finish in order to maximise the characteristics of the materials to fit concept requirements.

Drawing on quality slabs (20 mm to 40 mm) from the largest processing plant in southern Africa consisting of twelve latest technology gang-saws, two polishing and flaming lines yielding a production capacity of 400 000 m<sup>2</sup> per annum as well as from a thirteen disc and wire saw facility capable of producing in excess of 100 000 m<sup>2</sup> in thick slabs (40 mm to 100 mm), Minaco is equipped to handle projects great and small whilst ensuring that every installation is executed to perfection with the finest attention to detail.







PROJECT	<b>Private Residence</b>
ARCHITECT	<b>Tony Bentel</b>
LOCATION	<b>Sandhurst Johannesburg South Africa</b>
MATERIAL/S	<b>2 500m<sup>2</sup> Golden Dawn Sandstone Honed</b>







Golden Dawn Sandstone Lines



Golden Dawn Sandstone Flowers











PROJECT	<b>Bank City</b>
ARCHITECT	<b>Revel Fox</b>
LOCATION	<b>Simmonds Street Johannesburg South Africa</b>
MATERIAL/S	<b>24 000m<sup>2</sup> Paarl Grey Flamed</b>  <b>10 000m<sup>2</sup> Nero Impala® Polished</b>







Paarl Grey



Nero Impala®











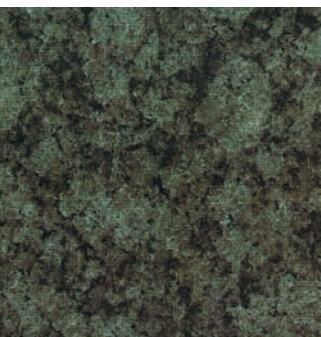
PROJECT	<b>Anglovaal Head Office</b>
ARCHITECT	<b>Louis Carol</b>
LOCATION	<b>2 Arnold Road Rosebank Johannesburg South Africa</b>
MATERIAL/S	<b>4 500m<sup>2</sup> Giallo Duna Flamed</b>  <b>1 500m<sup>2</sup> Verde SK Polished</b>



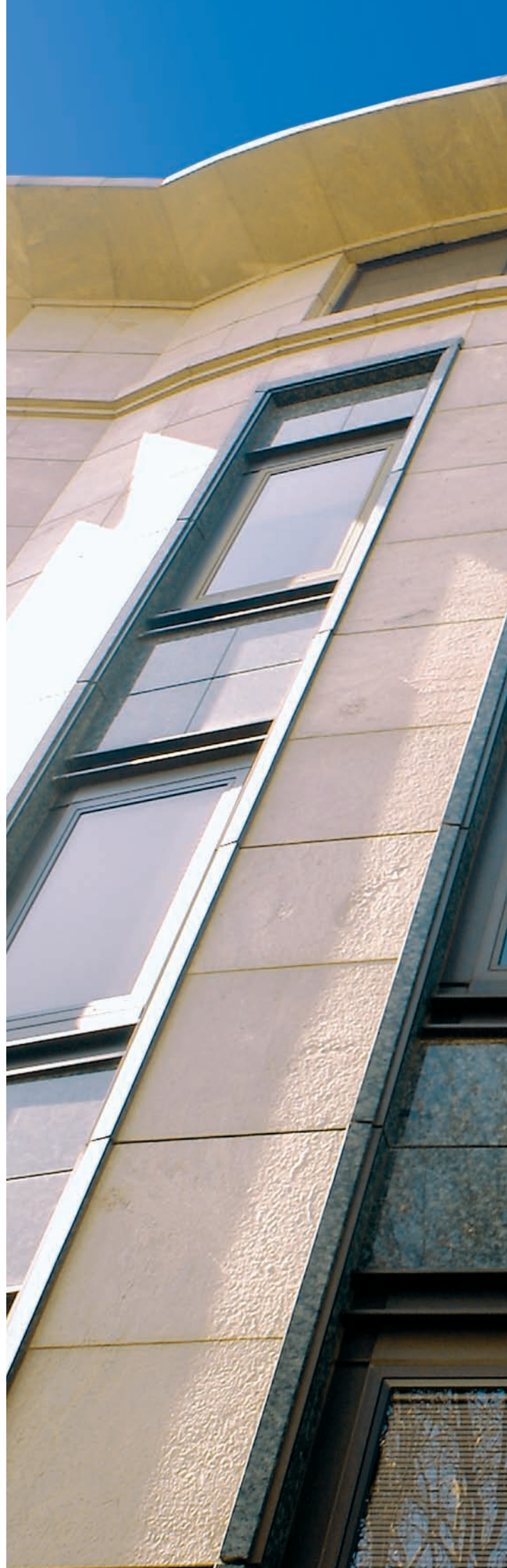




Giallo Duna



Verde SK











PROJECT	<b>Castle Wall</b>
ARCHITECT	<b>Osmond Lange</b>
LOCATION	<b>Melrose Arch Melrose Johannesburg South Africa</b>
MATERIAL/S	<b>4 500m<sup>2</sup> Golden Dawn Sandstone Hand Hewn</b>  <b>100m<sup>2</sup> Zimbabwe Black Polished</b>



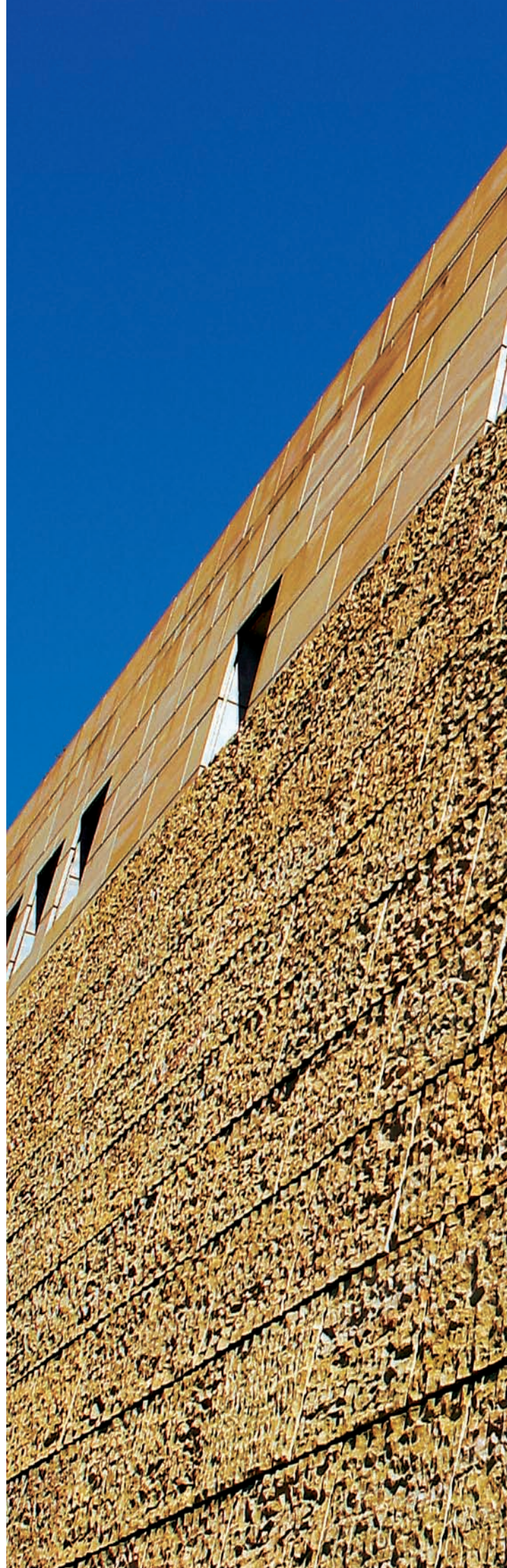




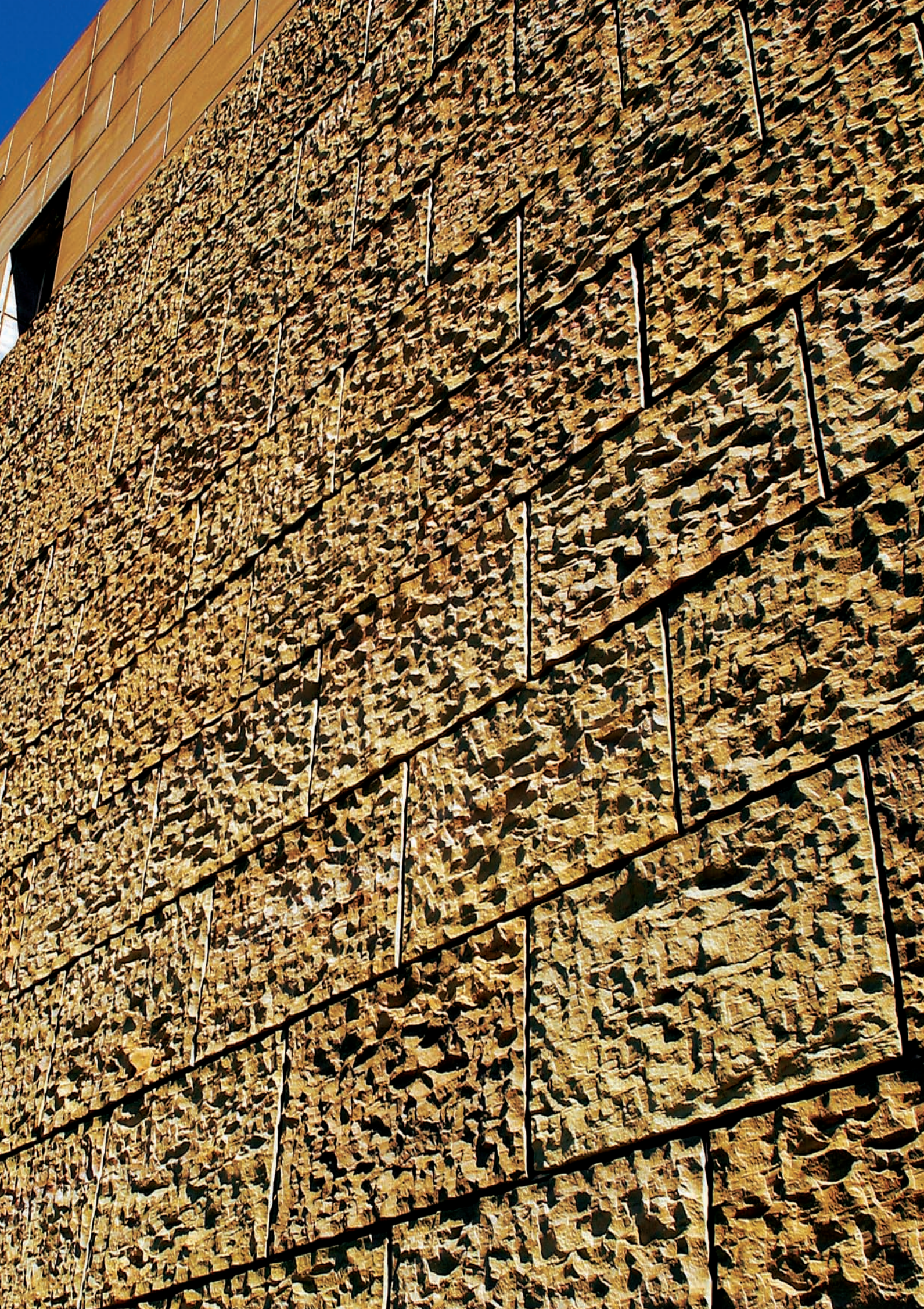
Golden Dawn Sandstone Lines



Zimbabwe Black











PROJECT	<b>Stanlib</b>
ARCHITECT	<b>TC Design</b>
LOCATION	<b>17 Melrose Boulevard Melrose Arch Melrose Johannesburg South Africa</b>
MATERIAL/S	<b>900m<sup>2</sup> Golden Dawn Sandstone Honed</b>







Golden Dawn Sandstone Lines











PROJECT	<b>Polifin</b>
ARCHITECT	<b>Boogertman Krige</b>
LOCATION	<b>56 Grosvenor Road Bryanston Johannesburg South Africa</b>
MATERIAL/S	<b>5 700m<sup>2</sup> Golden Dawn Sandstone Honed</b>  <b>500m<sup>2</sup> Giallo Duna Polished</b>







Golden Dawn Sandstone Lines



Giallo Duna











PROJECT	<b>Nedcor Bank Head Office</b>
ARCHITECT	<b>Manfred Hermer Grosskopf and Lombard</b>
LOCATION	<b>135 Rivonia Road Sandton Johannesburg South Africa</b>
MATERIAL/S	<b>23 000m<sup>2</sup> Moka Crème Limestone Honed</b>  <b>2 500m<sup>2</sup> Nero Impala® Honed</b>







Moka Crème Limestone



Nero Impala®











PROJECT	<b>Momentum Head Office</b>
ARCHITECT	<b>Boogertman Krige</b>
LOCATION	<b>268 West Avenue Centurion Pretoria South Africa</b>
MATERIAL/S	<b>5 100m<sup>2</sup> Golden Dawn Sandstone Honed</b>  <b>1 200m<sup>2</sup> Giallo Duna Polished</b>







Golden Dawn Sandstone Lines



Giallo Duna











PROJECT	<b>Mediterranean Shipping Company</b>
ARCHITECT	<b>Ellens and Whitfield</b>
LOCATION	<b>51 Grayston Drive Sandton Johannesburg South Africa</b>
MATERIAL/S	<b>4 000m<sup>2</sup> African Red Polished</b>  <b>500m<sup>2</sup> Zimbabwe Black Polished</b>







African Red



Zimbabwe Black





TERRANEAN SHIPPING







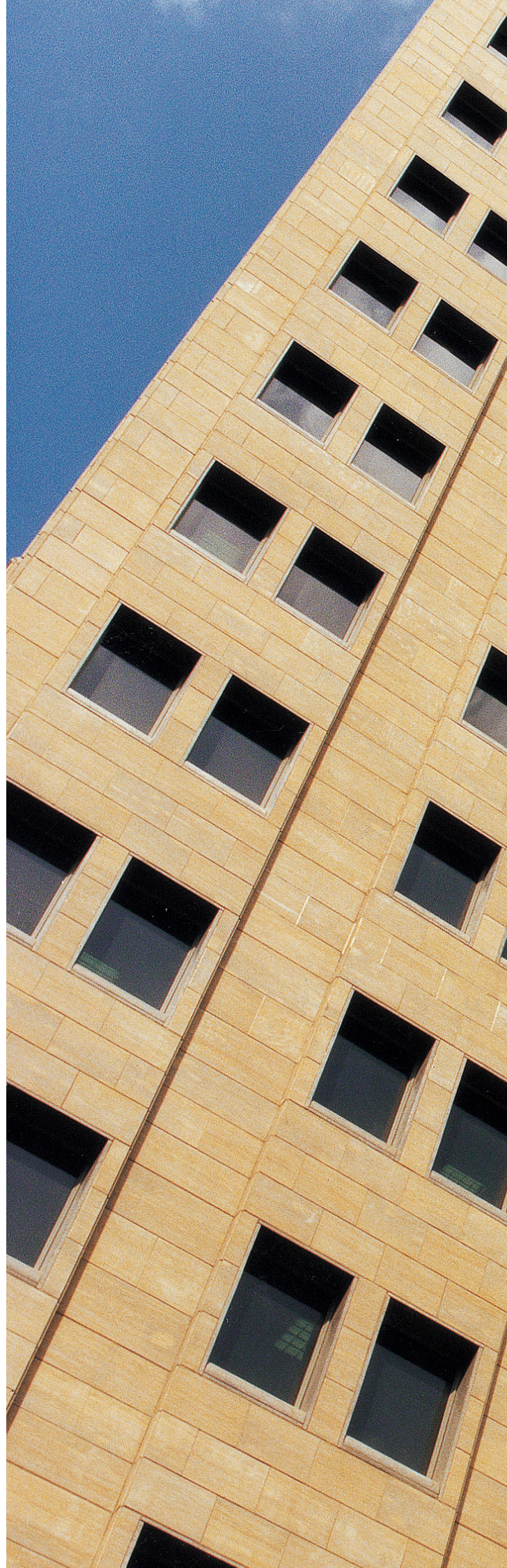
PROJECT	<b>Anglo American Head Office</b>
ARCHITECT	<b>RFB Consulting Architects</b>
LOCATION	<b>55 Marshall Street Johannesburg South Africa</b>
MATERIAL/S	<b>7 500m<sup>2</sup> Golden Dawn Sandstone Honed</b>  <b>1 500m<sup>2</sup> Verde Mare Polished</b>  <b>500m<sup>2</sup> South West African Marble Polished</b>







Golden Dawn Sandstone Lines











PROJECT	<b>Rand Merchant Bank</b>
ARCHITECT	<b>Boogertman Krige</b>
LOCATION	<b>Fredman Drive Sandton Johannesburg South Africa</b>
MATERIAL/S	<b>7 800m<sup>2</sup> Nero Impala® Polished</b>
	<b>1 200m<sup>2</sup> Giallo Duna Polished</b>



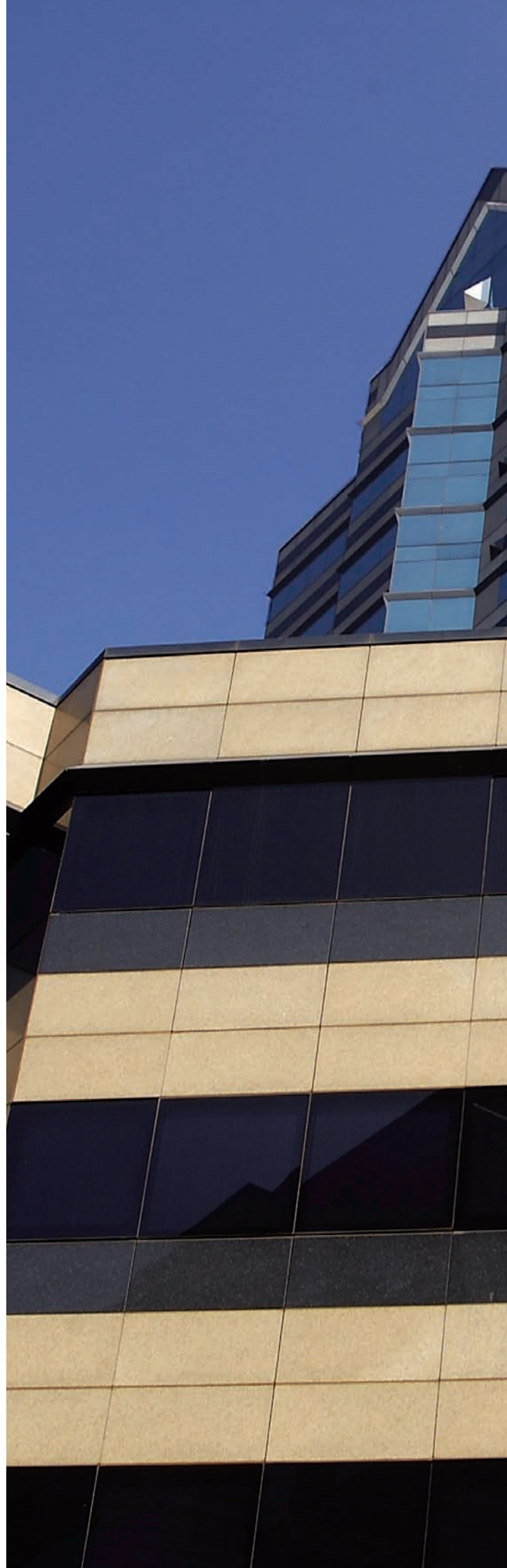




Nero Impala®



Giallo Duna







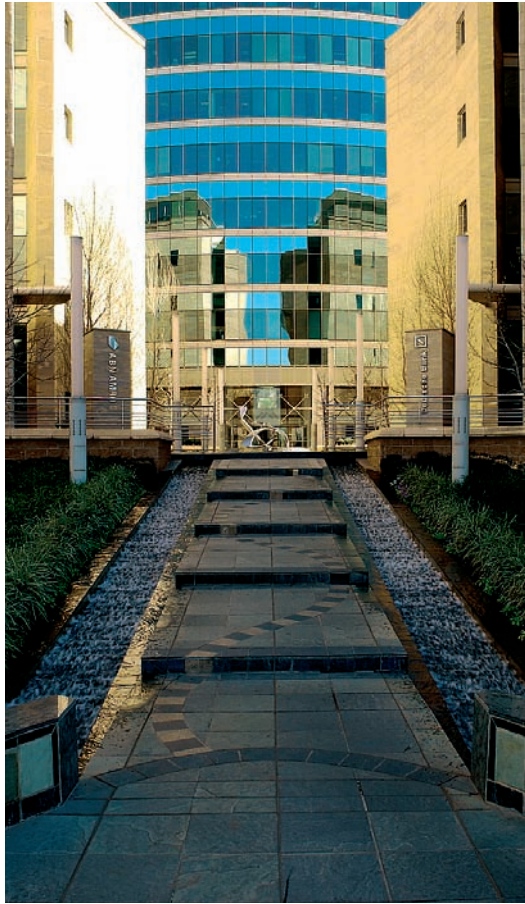




PROJECT	<b>Johannesburg Stock Exchange</b>
ARCHITECT	<b>TPC Architects</b>
LOCATION	<b>2 Gwen Lane Sandton Johannesburg South Africa</b>
MATERIAL/S	<b>11 650m<sup>2</sup> Golden Dawn Sandstone Honed</b>  <b>350m<sup>2</sup> Giallo Duna Polished</b>



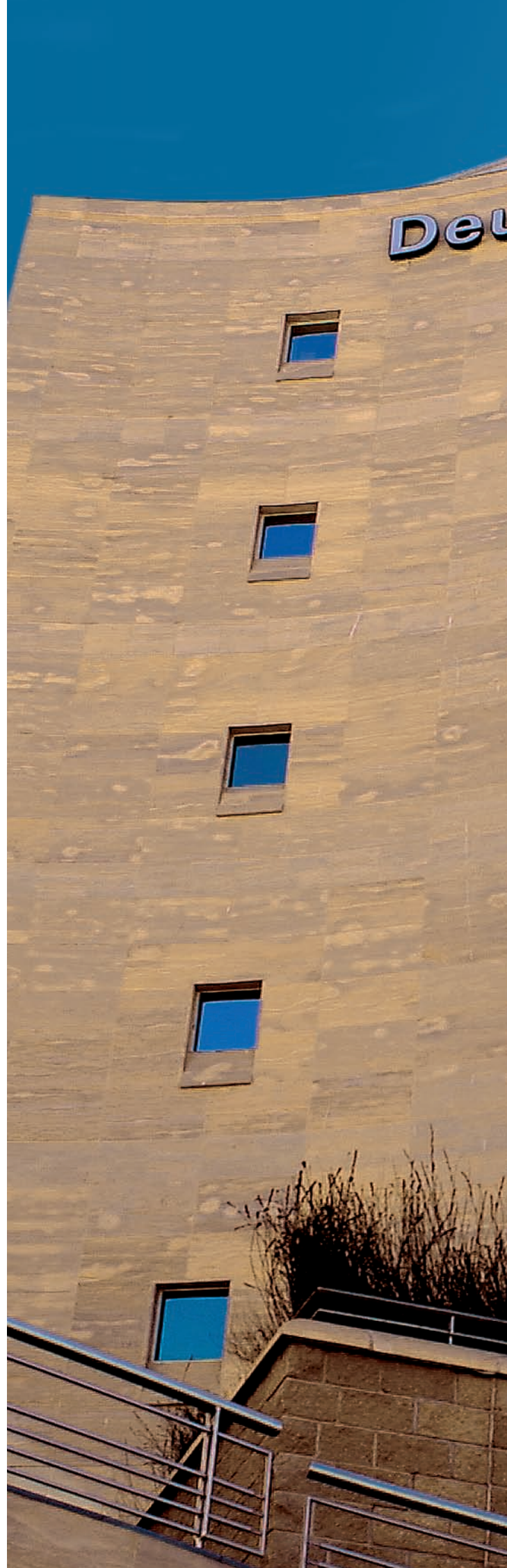




Golden Dawn Sandstone Lines



Giallo Duna





utsche Bank













# THE VENTILATED FAÇADE

The ventilated façade system is a practical solution for cladding external walls while simultaneously creating insulation and protection against underlying concrete or brick efflorescence. It is a fully reliable multi-layer mechanical building system characterised by a “moving air chamber” between the wall and the cladding. This insulating “chamber” is created by means of a closed joint face construction which results in vertical circulation of air due to the “chimney” effect.

The design team at Minaco Contracts has developed a ventilated façade specifically for the application of natural stone. This mechanical system uses a metal frame, usually aluminium, to transfer the horizontal and vertical loads back to the core of the building. Substantial brackets are anchored into the core by means of stainless steel anchor bolts manufactured from 304(A2) stainless steel to ISO and DIN specification and positioned strategically to support vertical mullions running from the bottom to the top of the wall to be clad. Horizontal rails are fixed to the mullions at intervals appropriate for the size of the natural stone modules. All the brackets, mullions and rails applied by Minaco are made of aluminium and produced in accordance with guidelines and recommendations given in the “Code of Practice for: Design and Installation of Natural Stone Cladding and Living” – British Standards Specification BS 8298:1994.

The outside finishing layer consists of natural stone panels produced within a 2 mm to 3 mm tolerance in length or width and a 1 mm tolerance in thickness. Panels are selected and laid out before fixing to ensure colour uniformity and are grooved at the top and bottom edges for slotting into the horizontal rail framework. Each section is thus supported independently without any weight bearing on the lower levels. The joints between these panels can either be filled with a silicone sealant or left open.

The separate elements of the ventilated façade are thus summarised as follows:

1. Anchored brackets and bolts
2. Damp proofing/insulation (if specified)
3. Vertical mullions
4. Horizontal load bearing rails
5. Natural stone panels

Minaco’s ventilated façade allows for virtually any shape to be incorporated into the system including curves. In order to incorporate curves, the natural stone panels are reduced in width and faceted on the general shape of the curve or especially cut in a curved shape. In this way it is possible to change the appearance of a plain concrete core into an architectural showpiece.

There are numerous advantages to using the ventilated façade in addition to architectural enhancements, namely:

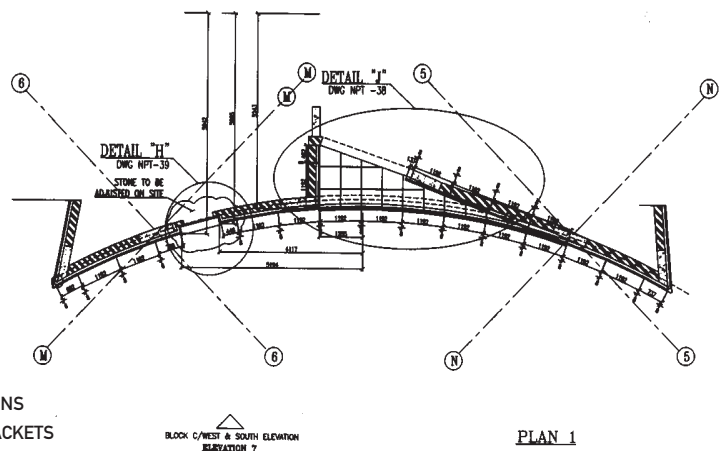
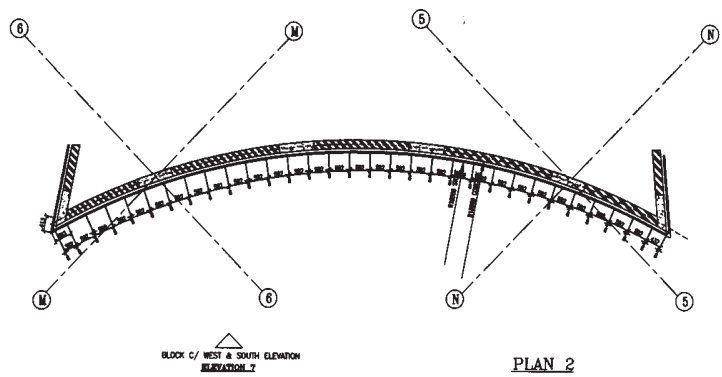
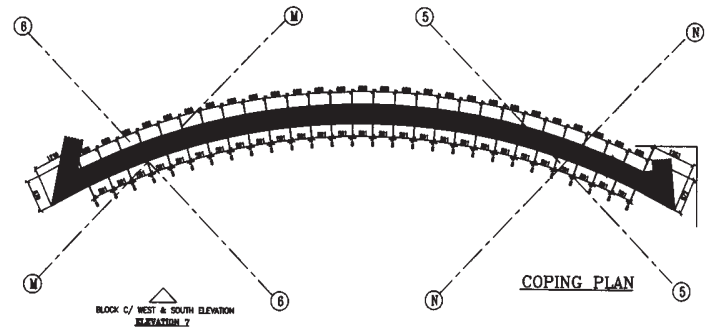
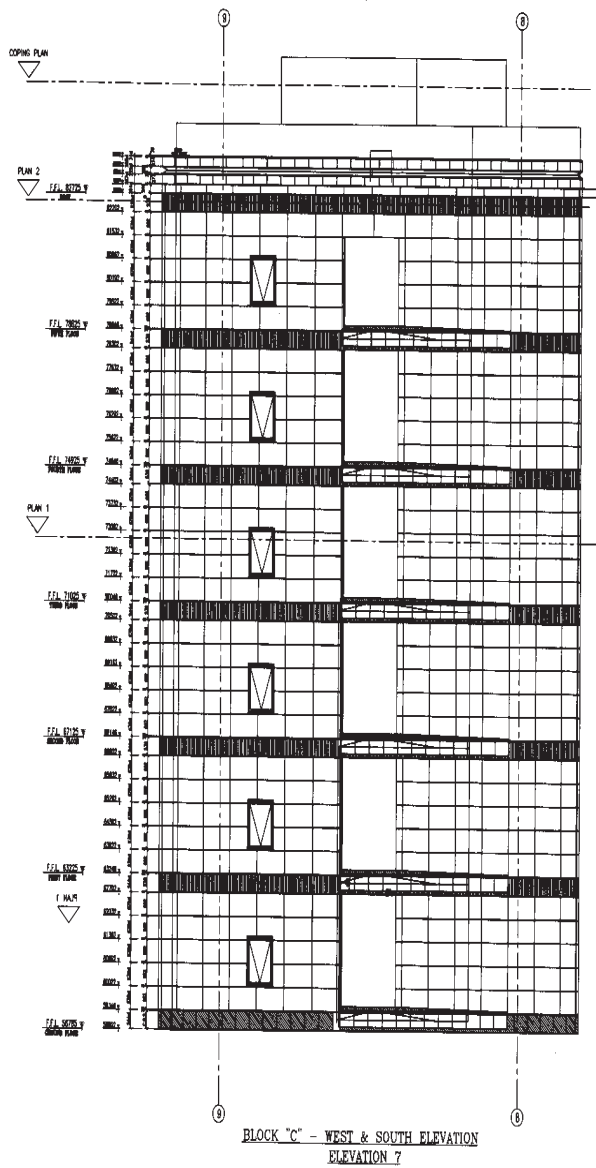
- Protection against rain, water, frost penetration and pollution corrosion
- Dispersion of dampness and humidity
- Improved sound proofing and insulation
- Energy saving due to reduced heat dispersion
- Concealment of unsightly wiring and piping
- No deterioration of appearance or structural integrity over time
- Reduced maintenance costs

Minaco treats each project independently. Therefore support structure elements, brackets, mullions, rails, anchors and fasteners are designed and engineered into a unique solution in accordance with project specification to achieve the best results.

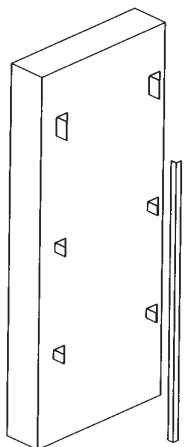




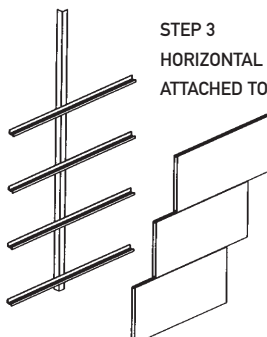
# THE VENTILATED FAÇADE



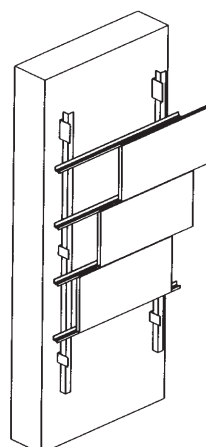
STEP 1  
ALUMINIUM BRACKETS  
ATTACHED TO WALL USING  
SPECIALY DESIGNED ANCHOR  
BOLTS



STEP 2  
VERTICAL MULLIONS  
ATTACHED TO BRACKETS



STEP 3  
HORIZONTAL LOAD BEARING RAILS  
ATTACHED TO VERTICAL MULLIONS



STEP 4  
NATURAL STONE PANELS  
INSERTED INTO RAILS

ANCHOR BOLTS USED TO ATTACH  
MULLIONS AND RAILS TO EACH  
OTHER ARE SPECIALY DESIGNED IN  
ACCORDANCE WITH DESIGN  
REQUIREMENTS AS STATED IN  
PROJECT SPECIFICATIONS



PROJECT PORTFOLIO





Right  
PROJECT **First National Bank**

LOCATION **Tyrwhitt Avenue  
Rosebank  
Johannesburg  
South Africa**

MATERIAL/S **2 000m<sup>2</sup>  
Bianco Carrara  
Polished**



Right  
PROJECT **Farringdon Court**

LOCATION **Farringdon Road  
London  
England**

MATERIAL/S **4 000m<sup>2</sup>  
Paarl Grey  
Flamed**  
  
**1 500m<sup>2</sup>  
African Red  
Polished**



Left  
PROJECT **Investec**

LOCATION **55 Fox Street  
Johannesburg  
South Africa**

MATERIAL/S **3 500m<sup>2</sup>  
South West  
African Marble  
Polished**



# PROJECT PORTFOLIO



Left  
PROJECT **The Palace Hotel**

LOCATION **Lost City  
Pilanesberg  
South Africa**

MATERIAL/S **8 000m<sup>2</sup>  
Crema Valencia  
Polished**

**2 000m<sup>2</sup>  
Rosso Verona  
Polished**



Left  
PROJECT **Lansdowne House**

LOCATION **Lansdowne Road  
Croydon  
England**

MATERIAL/S **1 500m<sup>2</sup>  
Paarl Grey  
Flamed**

**1 500m<sup>2</sup>  
Rosa Duna  
Polished**





Left  
PROJECT **Parliament Buildings**

LOCATION **Parliament Street  
Cape Town  
South Africa**

MATERIAL/S **6 000m<sup>2</sup>  
Golden Dawn Sandstone  
Honed**

**2 100m<sup>2</sup>  
Paarl Grey  
Flamed**

Below  
PROJECT **Private Residence**

LOCATION **Sandhurst  
Johannesburg  
South Africa**

MATERIAL/S **2 500m<sup>2</sup>  
Golden Dawn Sandstone  
Honed**





PROJECT PORTFOLIO





Left  
PROJECT **Safmarine  
Head Office**

LOCATION **22 Riebeek Street  
Cape Town  
South Africa**

MATERIAL/S **2 200m<sup>2</sup>  
Rosa Duna  
Polished**  
  
**900m<sup>2</sup>  
Nero Impala®  
Polished**

Below  
PROJECT **Sandton Sun Hotel**

LOCATION **5th Street  
Sandton  
Johannesburg  
South Africa**

MATERIAL/S **4 800m<sup>2</sup>  
Calacatta  
Polished**  
  
**500m<sup>2</sup>  
African Red  
Polished**

Right  
PROJECT **Church of  
Jesus Christ  
of Latter Day  
Saints**

LOCATION **57 Independence  
Avenue  
Osu  
Accra  
Ghana**

MATERIAL/S **2 800m<sup>2</sup>  
Namibian Pearl  
Honed**





# PROJECT PORTFOLIO



Left  
PROJECT      **Wierda Place**

LOCATION      **64 Wierda Road East  
Wierda Valley  
Sandton  
Johannesburg  
South Africa**

MATERIAL/S      **3 500m<sup>2</sup>  
Bianco Carrara  
Polished**

Below  
PROJECT      **TA Bank Centre**

LOCATION      **160 Jan Smuts Avenue  
Rosebank  
Johannesburg  
South Africa**

MATERIAL/S      **3 500m<sup>2</sup>  
Giallo Duna  
Polished**

**500m<sup>2</sup>  
Moka Crème Limestone  
Polished**







Left  
PROJECT **South Quay Plaza**

LOCATION **Marsh Wall  
Docklands  
London  
England**

MATERIAL/S **3 000m<sup>2</sup>  
Nero Impala®  
Flamed**

**1 000m<sup>2</sup>  
Paarl Grey  
Flamed**

Below  
PROJECT **Sandton Towers Hotel**

LOCATION **5th Street  
Sandton  
Johannesburg  
South Africa**

MATERIAL/S **3 000m<sup>2</sup>  
Giallo Duna  
Polished**

**1 500m<sup>2</sup>  
Zimbabwe Black  
Polished**





Right  
PROJECT **Triton Square**

LOCATION **Euston Road  
Regents Place  
London  
England**

MATERIAL/S **4 000m<sup>2</sup>  
Zimbabwe Black  
Polished**



Right  
PROJECT **JCI House**

LOCATION **28 Harrison Street  
Johannesburg  
South Africa**

MATERIAL/S **2 800m<sup>2</sup>  
Paarl Grey  
Polished**  
  
**800m<sup>2</sup>  
Nero Impala®  
Polished**  
  
**500m<sup>2</sup>  
Bianco Carrara  
Polished**  
  
**400m<sup>2</sup>  
Cippolino  
Polished**



Left  
PROJECT **Bowman Gilfillan  
Head Office**

LOCATION **165 West Street  
Sandton  
Johannesburg  
South Africa**

MATERIAL/S **1 054m<sup>2</sup>  
Golden Dawn  
Sandstone  
Polished & honed**



# PROJECT PORTFOLIO



Left  
PROJECT **Assore House**

LOCATION **15 Fricker Road  
Illovo  
Johannesburg  
South Africa**

MATERIAL/S **4 000m<sup>2</sup>  
Cape Red  
Polished**



Left  
PROJECT **Standard Bank**

LOCATION **156 5th Street  
Sandton  
Johannesburg  
South Africa**

MATERIAL/S **4 000m<sup>2</sup>  
Calacatta  
Polished**

**800m<sup>2</sup>  
Bianco Carrara  
Polished**



Right  
PROJECT **Church of Jesus Christ  
of Latter Day Saints**

LOCATION **Temple Road  
Aba  
Nigeria**

MATERIAL/S **4 000m<sup>2</sup>  
Namibian Pearl  
Honed**

Below  
PROJECT **Supreme Court**

LOCATION **2 Bird Street Central  
Port Elizabeth  
South Africa**

MATERIAL/S **2 300m<sup>2</sup>  
Namaqua Fantasia  
Honed**

**700m<sup>2</sup>  
Nero Impala®  
Flamed**





PROJECT HISTORY

PROJECT LOCATION	<b>Bank of Mauritius</b> <b>Royal Road, Bourbon and</b> <b>Sir William Newton Streets,</b> <b>Port Louis, Mauritius</b>
MATERIAL/S	<b>Giallo Namib, Zimbabwe Black</b>
PROJECT LOCATION	<b>Bank of Tanzania</b> <b>10 Mirambo Street,</b> <b>Dar-es-Salaam, Tanzania</b>
MATERIAL/S	<b>Namibian Pearl, Nero Impala®</b>
PROJECT LOCATION	<b>Bank of Zanzibar</b> <b>Cnr Gulioni and Malawi Roads,</b> <b>Stonetown, Zanzibar</b>
MATERIAL/S	<b>Namibian Pearl, Nero Impala®</b>
PROJECT LOCATION	<b>State Bank of Mauritius</b> <b>Place Margeot, Roal Road,</b> <b>Rosehill, Mauritius</b>
MATERIAL/S	<b>African Red, Nero Impala®,</b> <b>Paarl Grey, Zimbabwe Black</b>
PROJECT LOCATION	<b>Bowman Gilfillan Head Office</b> <b>165 West Street, Sandton,</b> <b>Johannesburg, South Africa</b>
MATERIAL/S	<b>Golden Dawn Sandstone</b>
PROJECT LOCATION	<b>Cathedral Square</b> <b>16 Jules Koenig Street,</b> <b>Port Louis, Mauritius</b>
MATERIAL/S	<b>Volakas</b>
PROJECT LOCATION	<b>Church of Jesus Christ of</b> <b>Latter Day Saints</b> <b>Temple Road,</b> <b>Aba, Nigeria</b>
MATERIAL/S	<b>Namibian Pearl</b>
PROJECT LOCATION	<b>Pick 'n Pay</b> <b>South Road, Morningside,</b> <b>Johannesburg, South Africa</b>
MATERIAL/S	<b>Eureka</b>
PROJECT LOCATION MATERIAL/S	<b>Private Residence</b> <b>Cape Town, South Africa</b> <b>Golden Dawn Sandstone</b>
PROJECT LOCATION	<b>Iris Road Office Complex</b> <b>Iris Road, Bedfordview,</b> <b>Johannesburg, South Africa</b>
MATERIAL/S	<b>Sapile</b>
PROJECT LOCATION	<b>Pick 'n Pay Head Office</b> <b>2 Allum Road, Kensington,</b> <b>Johannesburg, South Africa</b>
MATERIAL/S	<b>Giallo Duna, Giallo Namib,</b> <b>Golden Dawn Sandstone</b>
PROJECT LOCATION MATERIAL/S	<b>Broomielaw Glasgow</b> <b>Glasgow, Scotland</b> <b>Cape Red</b>
PROJECT LOCATION	<b>Castle Wall</b> <b>Melrose Arch, Melrose,</b> <b>Johannesburg, South Africa</b>
MATERIAL/S	<b>Golden Dawn Sandstone,</b> <b>Zimbabwe Black</b>

PROJECT LOCATION	<b>Church of Jesus Christ of</b> <b>Latter Day Saints</b> <b>57 Independence Avenue, Osu,</b> <b>Accra, Ghana</b>
MATERIAL/S	<b>Namibian Pearl</b>
PROJECT LOCATION	<b>Civitas</b> <b>Cnr Andries and Struben Streets,</b> <b>Pretoria, South Africa</b>
MATERIAL/S	<b>Nero Impala®, Paarl Grey</b>
PROJECT LOCATION	<b>Clifton Ridge House</b> <b>Ridge Road, Clifton,</b> <b>Cape Town, South Africa</b>
MATERIAL/S	<b>Golden Dawn Sandstone</b>
PROJECT LOCATION	<b>Deeds Office</b> <b>Cnr Aliwal Street and</b> <b>Nelson Mandela Drive,</b> <b>Bloemfontein, South Africa</b>
MATERIAL/S	<b>Golden Dawn Sandstone, Parys</b>
PROJECT LOCATION	<b>Private Residence</b> <b>Sandhurst,</b> <b>Johannesburg, South Africa</b>
MATERIAL/S	<b>Golden Dawn Sandstone, Olive Green®,</b> <b>Statuario, Zimbabwe Black</b>
PROJECT LOCATION	<b>Stanlib</b> <b>17 Melrose Boulevard, Melrose Arch,</b> <b>Melrose, Johannesburg, South Africa</b>
MATERIAL/S	<b>Golden Dawn Sandstone</b>
PROJECT LOCATION	<b>State Bank of Mauritius</b> <b>Royal Road,</b> <b>Curepipe, Mauritius</b>
MATERIAL/S	<b>African Red, Nero Impala®, Paarl Grey,</b> <b>Zimbabwe Black</b>
PROJECT LOCATION	<b>United States Embassy</b> <b>877 Pretorius Street,</b> <b>Pretoria, South Africa</b>
MATERIAL/S	<b>Namibian Pearl, Rosa Beta</b>
PROJECT LOCATION	<b>Assore House</b> <b>15 Fricker Road, Illovo,</b> <b>Johannesburg, South Africa</b>
MATERIAL/S	<b>Cape Red</b>
PROJECT LOCATION	<b>F1 External Façade</b> <b>Melrose Arch, Melrose,</b> <b>Johannesburg, South Africa</b>
MATERIAL/S	<b>Golden Dawn Sandstone</b>
PROJECT LOCATION	<b>Mediterranean Shipping Company</b> <b>1 Mediterranean Street, Foreshore,</b> <b>Cape Town, South Africa</b>
MATERIAL/S	<b>African Red</b>
PROJECT LOCATION	<b>Nedcor Bank Head Office</b> <b>135 Rivonia Road, Sandton,</b> <b>Johannesburg, South Africa</b>
MATERIAL/S	<b>Moka Crème Limestone, Nero Impala®</b>
PROJECT LOCATION	<b>Triton Square</b> <b>Euston Road, Regents Place,</b> <b>London, England</b>
MATERIAL/S	<b>Zimbabwe Black</b>



PROJECT LOCATION	<b>Johannesburg Stock Exchange</b> <b>2 Gwen Lane, Sandton, Johannesburg, South Africa</b>
MATERIAL/S	<b>Giallo Duna, Golden Dawn Sandstone, Olive Green®</b>
PROJECT LOCATION	<b>Peregrine</b> <b>6A Sandown Valley Crescent, Sandton, Johannesburg, South Africa</b>
MATERIAL/S	<b>Zimbabwe Black</b>
PROJECT LOCATION	<b>Sandown Mews</b> <b>88 Stella Street, Sandton, Johannesburg, South Africa</b>
MATERIAL/S	<b>Verde SK</b>
PROJECT LOCATION MATERIAL/S	<b>Centrica</b> <b>Edinburgh, Scotland</b> <b>Black Satin</b>
PROJECT LOCATION	<b>Marlin Head Office</b> <b>21 Impala Road, Chislehurst, Sandton, Johannesburg, South Africa</b>
MATERIAL/S	<b>Giallo Duna, Golden Dawn Sandstone, Nero Impala®, Olive Green®, Virginia Mist, Zimbabwe Black</b>
PROJECT LOCATION	<b>Momentum Head Office</b> <b>268 West Avenue, Centurion, Pretoria, South Africa</b>
MATERIAL/S	<b>Giallo Duna, Golden Dawn Sandstone</b>
PROJECT LOCATION	<b>Bank City – Fountain</b> <b>Simmonds Street, Johannesburg, South Africa</b>
MATERIAL/S	<b>Nero Impala®</b>
PROJECT LOCATION MATERIAL/S	<b>Factory Complex</b> <b>Atlanta, USA</b> <b>Golden Dawn Sandstone, Olive Green®</b>
PROJECT LOCATION	<b>Hilton Hotel</b> <b>Cnr Walnut and Ordnance Roads, Durban, South Africa</b>
MATERIAL/S	<b>Bianco Carrara, Blue Pearl, Botticino Classico, Golden Dawn Sandstone, Nero Impala®, Portoro, Verde SK, Zimbabwe Black</b>
PROJECT LOCATION	<b>Johannesburg International Airport</b> <b>Kempton Park, Johannesburg, South Africa</b>
MATERIAL/S	<b>Bertanie, Parys</b>
PROJECT LOCATION MATERIAL/S	<b>Maria Rashid Mission</b> <b>Newcastle, South Africa</b> <b>Golden Dawn Sandstone</b>
PROJECT LOCATION	<b>Munich Reinsurance</b> <b>47 Empire Road, Parktown, Johannesburg, South Africa</b>
MATERIAL/S	<b>Blue Pearl, Giallo Duna, Golden Dawn Sandstone</b>
PROJECT LOCATION	<b>Northmead Square</b> <b>Cnr 14th Avenue and O'Reilly Merry Street, Benoni, South Africa</b>
MATERIAL/S	<b>Rosso Siena</b>

PROJECT LOCATION	<b>Norwich Lakeside Mall</b> <b>Tom Jones Street, Benoni, South Africa</b>
MATERIAL/S	<b>African Red, Blue Pearl, South West African Marble</b>
PROJECT LOCATION	<b>Persequor</b> <b>1 Quintin Brand Street, Pretoria, South Africa</b>
MATERIAL/S	<b>African Red, Belfast Black, Travertine, Zimbabwe Black</b>
PROJECT LOCATION	<b>Polifin</b> <b>56 Grosvenor Road, Bryanston, Johannesburg, South Africa</b>
MATERIAL/S	<b>Giallo Duna, Golden Dawn Sandstone</b>
PROJECT LOCATION MATERIAL/S	<b>South African Post Office Ltd</b> <b>Nationally throughout South Africa</b> <b>Rosso Siena</b>
PROJECT LOCATION MATERIAL/S	<b>Private Residence</b> <b>Johannesburg, South Africa</b> <b>Golden Dawn Sandstone, Travertine, Zimbabwe Black</b>
PROJECT LOCATION MATERIAL/S	<b>Private Residence</b> <b>Cape Town, South Africa</b> <b>Golden Dawn Sandstone</b>
PROJECT LOCATION MATERIAL/S	<b>Provincial Legislature Building</b> <b>Nobengula Street, Kimberley, South Africa</b> <b>African Red, Bianco Cardinale, Nero Impala®</b>
PROJECT LOCATION	<b>South Quay Plaza</b> <b>Marsh Wall, Docklands, London, England</b>
MATERIAL/S	<b>Nero Impala®, Paarl Grey</b>
PROJECT LOCATION	<b>The Glen Shopping Centre</b> <b>Cnr Letaba and Orpen Roads, Oakdene, Johannesburg, South Africa</b>
MATERIAL/S	<b>Capricorn, Rosso Verona</b>
PROJECT LOCATION	<b>Tiber Chelsea</b> <b>Cnr Stella and West Streets, Sandton, Johannesburg, South Africa</b>
MATERIAL/S	<b>Rosa Duna</b>
PROJECT LOCATION	<b>Welgevonden Lodge</b> <b>Vaalwater, Waterberg, South Africa</b>
MATERIAL/S	<b>Zimbabwe Black</b>
PROJECT LOCATION	<b>Adamson &amp; Nielsen</b> <b>42 4th Street, Wynberg, Johannesburg, South Africa</b>
MATERIAL/S	<b>Zimbabwe Black</b>
PROJECT LOCATION	<b>Auto &amp; General Headquarters</b> <b>Barry Hertzog Avenue, Auckland Park, Johannesburg, South Africa</b>
MATERIAL/S	<b>Zimbabwe Black</b>
PROJECT LOCATION	<b>Boundary Terrace</b> <b>Campground Road, Newlands, Cape Town, South Africa</b>
MATERIAL/S	<b>Zimbabwe Black</b>



PROJECT HISTORY

PROJECT LOCATION MATERIAL/S	<b>Celestino Hotel</b> <b>Pretoria, South Africa</b> <b>Nero Impala®</b>
PROJECT LOCATION MATERIAL/S	<b>Dunkeld Office Park</b> <b>6 North Road, Dunkeld,</b> <b>Johannesburg, South Africa</b> <b>Rojo Alicante, Verde Guatemala,</b> <b>Zimbabwe Black</b>
PROJECT LOCATION MATERIAL/S	<b>Eastgate Office Park</b> <b>Ernest Oppenheimer Avenue, Bruma,</b> <b>Johannesburg, South Africa</b> <b>Kashmir White</b>
PROJECT LOCATION MATERIAL/S	<b>Edenburg Terraces</b> <b>348 10th Avenue, Rivonia,</b> <b>Johannesburg, South Africa</b> <b>Nero Impala®</b>
PROJECT LOCATION MATERIAL/S	<b>Ferndale Office Park</b> <b>Cnr Oak Avenue and Harding Street,</b> <b>Ferndale, Randburg, South Africa</b> <b>Prairie Black</b>
PROJECT LOCATION MATERIAL/S	<b>Firmenich</b> <b>Cnr 16th and Pharmaceutical Roads,</b> <b>Midrand, South Africa</b> <b>Nero Impala®</b>
PROJECT LOCATION MATERIAL/S	<b>First National Bank</b> <b>Tyrwhitt Avenue, Rosebank,</b> <b>Johannesburg, South Africa</b> <b>Bianco Carrara</b>
PROJECT LOCATION MATERIAL/S	<b>Grace Hotel</b> <b>54 Bath Avenue, Rosebank,</b> <b>Johannesburg, South Africa</b> <b>African Red, Rockwell Pink,</b> <b>Verdefontein</b>
PROJECT LOCATION MATERIAL/S	<b>JP Morgan</b> <b>Maude Street, Sandton,</b> <b>Johannesburg, South Africa</b> <b>Giallo Duna</b>
PROJECT LOCATION MATERIAL/S	<b>Mauritius Union Assurance</b> <b>Plaine Laizun,</b> <b>Port Louis, Mauritius</b> <b>Nero Impala®, Verde SK</b>
PROJECT LOCATION MATERIAL/S	<b>Max City</b> <b>Cnr Remy Ollier and Louis Pasteur Streets,</b> <b>Port Louis, Mauritius</b> <b>Verde SK</b>
PROJECT LOCATION MATERIAL/S	<b>Metropolitan Life</b> <b>Mispel Road, Bellville,</b> <b>Cape Town, South Africa</b> <b>Golden Dawn Sandstone</b>
PROJECT LOCATION MATERIAL/S	<b>Phokeng Shopping Centre</b> <b>Rustenburg, South Africa</b> <b>Prairie Black</b>
PROJECT LOCATION MATERIAL/S	<b>Private Residence</b> <b>Johannesburg, South Africa</b> <b>White Koelea</b>
PROJECT LOCATION MATERIAL/S	<b>Private Residence</b> <b>Johannesburg, South Africa</b> <b>South West African Marble,</b> <b>Zimbabwe Black</b>

PROJECT LOCATION MATERIAL/S	<b>Rand Merchant Bank - Quad</b> <b>Fredman Drive, Sandton,</b> <b>Johannesburg, South Africa</b> <b>African Red, Giallo Duna,</b> <b>Nero Impala®, Prairie Black</b>
PROJECT LOCATION MATERIAL/S	<b>Standard Bank</b> <b>156 5th Street, Sandton,</b> <b>Johannesburg, South Africa</b> <b>Bianco Carrara, Calacatta</b>
PROJECT LOCATION MATERIAL/S	<b>TA Bank Centre</b> <b>160 Jan Smuts Avenue, Rosebank,</b> <b>Johannesburg, South Africa</b> <b>Giallo Duna, Moka Crème Limestone</b>
PROJECT LOCATION MATERIAL/S	<b>The Forum</b> <b>Maude Street, Sandton,</b> <b>Johannesburg, South Africa</b> <b>Giallo Duna</b>
PROJECT LOCATION MATERIAL/S	<b>Wierda Place</b> <b>64 Wierda Road East, Wierda Valley,</b> <b>Sandton, Johannesburg, South Africa</b> <b>Bianco Carrara</b>
PROJECT LOCATION MATERIAL/S	<b>5 Sturdee Avenue</b> <b>Rosebank,</b> <b>Johannesburg, South Africa</b> <b>Namibian Pearl, Rosa Duna</b>
PROJECT LOCATION MATERIAL/S	<b>Centurion Crescent</b> <b>Lenchen Avenue, Centurion,</b> <b>Pretoria, South Africa</b> <b>Black Slate, Rosso Siena</b>
PROJECT LOCATION MATERIAL/S	<b>Church Street</b> <b>Pretoria, South Africa</b> <b>Nero Impala®</b>
PROJECT LOCATION MATERIAL/S	<b>Corporate Place</b> <b>23 Fredman Drive, Sandton,</b> <b>Johannesburg, South Africa</b> <b>Filetto Rosso</b>
PROJECT LOCATION MATERIAL/S	<b>Enoch Sontonga Memorial</b> <b>Graf Street, Braamfontein,</b> <b>Johannesburg, South Africa</b> <b>Belfast Black</b>
PROJECT LOCATION MATERIAL/S	<b>Fedhealth Office Park</b> <b>Johannesburg, South Africa</b> <b>Verdefontein</b>
PROJECT LOCATION MATERIAL/S	<b>Grarick Estates</b> <b>Olivia Building, Primrose Hill,</b> <b>Johannesburg, South Africa</b> <b>Botticino Fiorito</b>
PROJECT LOCATION MATERIAL/S	<b>Hunts End – Blocks 1 &amp; 2</b> <b>36 Wierda Road West, Wierda Valley,</b> <b>Sandton, Johannesburg, South Africa</b> <b>Paarl Grey, Verdefontein</b>
PROJECT LOCATION MATERIAL/S	<b>MTN Executive Offices</b> <b>Alice Lane, Sandton,</b> <b>Johannesburg, South Africa</b> <b>Eureka, Nero Impala®, Rojo Alicante,</b> <b>Star Galaxy, Zimbabwe Black</b>



PROJECT LOCATION	<b>Norwood Garden Village</b> <b>69 Hamlin Street, Norwood,</b> <b>Johannesburg, South Africa</b>
MATERIAL/S	<b>African Red, Namaqua Fantasia</b>
PROJECT LOCATION	<b>Orchid Towers</b> <b>20 Sir William Newton Street,</b> <b>Port Louis, Mauritius</b>
MATERIAL/S	<b>Rosa Duna</b>
PROJECT LOCATION	<b>Pinmill Farm – Block F</b> <b>164 Katherine Street, Sandton,</b> <b>Johannesburg, South Africa</b>
MATERIAL/S	<b>Bianco Carrara, Nero Impala®</b>
PROJECT LOCATION	<b>Q Data – Blocks A, B &amp; C</b> <b>789 16th Road, Randjies Park,</b> <b>Midrand, South Africa</b>
MATERIAL/S	<b>Balmoral Red, Giallo Duna</b>
PROJECT LOCATION	<b>Rand Merchant Bank – Towers</b> <b>Fredman Drive, Sandton,</b> <b>Johannesburg, South Africa</b>
MATERIAL/S	<b>Giallo Duna, Nero Impala®</b>
PROJECT LOCATION	<b>The Mosque</b> <b>Kerk Street,</b> <b>Johannesburg, South Africa</b>
MATERIAL/S	<b>African Red</b>
PROJECT LOCATION	<b>Town Square</b> <b>50 Buitenkant Street,</b> <b>Cape Town, South Africa</b>
MATERIAL/S	<b>African Red</b>
PROJECT LOCATION	<b>UAL Offices</b> <b>Newton Street, Killarney,</b> <b>Johannesburg, South Africa</b>
MATERIAL/S	<b>Golden Dawn Sandstone, Travertine,</b> <b>Zimbabwe Black</b>
PROJECT LOCATION	<b>Woolworths</b> <b>45 Kerk Street,</b> <b>Johannesburg, South Africa</b>
MATERIAL/S	<b>African Lilac, African Red, Nero Impala®</b>
PROJECT LOCATION	<b>Anglovaal Head Office</b> <b>2 Arnold Road, Rosebank,</b> <b>Johannesburg, South Africa</b>
MATERIAL/S	<b>Giallo Duna, Verde SK</b>
PROJECT LOCATION	<b>Fedlife</b> <b>Sturdee Avenue, Rosebank,</b> <b>Johannesburg, South Africa</b>
MATERIAL/S	<b>Botticino Classico, Pesca Classico,</b> <b>Verdefontein</b>
PROJECT LOCATION	<b>Frans Indongo Gardens</b> <b>Bulow Street,</b> <b>Windhoek, Namibia</b>
MATERIAL/S	<b>Namibian Pearl, Rosa Duna</b>
PROJECT LOCATION	<b>Gateway II</b> <b>90 Rivonia Road, Sandton,</b> <b>Johannesburg, South Africa</b>
MATERIAL/S	<b>Giallo Duna, Namibian Pearl,</b> <b>Prairie Black</b>
PROJECT LOCATION	<b>Genbel</b> <b>3A Summit Road, Dunkeld West,</b> <b>Johannesburg, South Africa</b>
MATERIAL/S	<b>African Red, Belfast Black, Travertine,</b> <b>Zimbabwe Black</b>

PROJECT LOCATION	<b>JCI House (Gencor)</b> <b>28 Harrison Street,</b> <b>Johannesburg, South Africa</b>
MATERIAL/S	<b>Bianco Carrara, Cippolino,</b> <b>Nero Impala®, Paarl Grey</b>
PROJECT LOCATION	<b>Libridge Parkade</b> <b>Ameshoff Street, Braamfontein,</b> <b>Johannesburg, South Africa</b>
MATERIAL/S	<b>Tropical Sun</b>
PROJECT LOCATION	<b>Mauritius Telecom Centre</b> <b>Edith Cavell Street,</b> <b>Port Louis, Mauritius</b>
MATERIAL/S	<b>Nero Impala®</b>
PROJECT LOCATION	<b>Mediterranean Shipping Company</b> <b>51 Grayston Drive, Sandton,</b> <b>Johannesburg, South Africa</b>
MATERIAL/S	<b>African Red, Zimbabwe Black</b>
PROJECT LOCATION	<b>Old Mutual Centre</b> <b>300 Smith Street,</b> <b>Durban, South Africa</b>
MATERIAL/S	<b>African Red, Golden Dawn Sandstone</b>
PROJECT LOCATION	<b>Portuguese Welfare Society</b> <b>219 3rd Street, Albertskroon,</b> <b>Johannesburg, South Africa</b>
MATERIAL/S	<b>Prairie Black</b>
PROJECT LOCATION	<b>Rand Merchant Bank – West Crescent</b> <b>Fredman Drive, Sandton,</b> <b>Johannesburg, South Africa</b>
MATERIAL/S	<b>Giallo Duna</b>
PROJECT LOCATION	<b>Standard Bank</b> <b>5 Simmonds Street,</b> <b>Johannesburg, South Africa</b>
MATERIAL/S	<b>Paarl Grey, Rojo Alicante,</b> <b>Zimbabwe Black</b>
PROJECT LOCATION	<b>Cabanas Hotel</b> <b>Sun City, Pilanesberg, South Africa</b>
MATERIAL/S	<b>Rosso Verona</b>
PROJECT LOCATION	<b>Gallagher Estate</b> <b>19 Richards Drive,</b> <b>Midrand, South Africa</b>
MATERIAL/S	<b>Bianco Carrara, Verde Guatemala</b>
PROJECT LOCATION	<b>Main Hotel</b> <b>Sun City, Pilanesberg, South Africa</b>
MATERIAL/S	<b>Rosso Verona</b>
PROJECT LOCATION	<b>Metropolitan Life</b> <b>391 Smith Street,</b> <b>Durban, South Africa</b>
MATERIAL/S	<b>African Red</b>
PROJECT LOCATION	<b>South African Reserve Bank</b> <b>57 West Street, Newtown,</b> <b>Johannesburg, South Africa</b>
MATERIAL/S	<b>Bianca Carrara, Verde Mare</b>
PROJECT LOCATION	<b>South African Reserve Bank</b> <b>25 Burg Street,</b> <b>Cape Town, South Africa</b>
MATERIAL/S	<b>Namibian Pearl</b>



## PROJECT HISTORY

PROJECT LOCATION	<b>Carlton Hotel</b> <b>Cnr Main and Kruis Streets,</b> <b>Johannesburg, South Africa</b>
MATERIAL/S	<b>African Red</b>
PROJECT LOCATION	<b>Investec</b> <b>55 Fox Street,</b> <b>Johannesburg, South Africa</b>
MATERIAL/S	<b>South West African Marble</b>
PROJECT LOCATION	<b>Mauritius Commercial Bank</b> <b>9-15 Sir William Newton Street,</b> <b>Port Louis, Mauritius</b>
MATERIAL/S	<b>Belfast Black, Namibian Pearl</b>
PROJECT LOCATION	<b>Medcor Building</b> <b>John Kennedy Street,</b> <b>Port Louis, Mauritius</b>
MATERIAL/S	<b>Belfast Black, Namibian Pearl,</b> <b>Nero Impala®</b>
PROJECT LOCATION	<b>SRK House</b> <b>265 Oxford Road, Illovo,</b> <b>Johannesburg, South Africa</b>
MATERIAL/S	<b>Nero Impala®, Verdefontein</b>
PROJECT LOCATION	<b>Sandton Towers Hotel</b> <b>5th Street, Sandton,</b> <b>Johannesburg, South Africa</b>
MATERIAL/S	<b>Giallo Duna, Zimbabwe Black</b>
PROJECT LOCATION	<b>Sanlam Parkade</b> <b>208-212 Jeppe Street,</b> <b>Johannesburg, South Africa</b>
MATERIAL/S	<b>Bianco Carrara</b>
PROJECT LOCATION	<b>State Bank of Mauritius</b> <b>Quatre Bornes, Mauritius</b>
MATERIAL/S	<b>Belfast Black, Nero Impala®</b>
PROJECT LOCATION	<b>State Archives</b> <b>72 Roeland Street,</b> <b>Cape Town, South Africa</b>
MATERIAL/S	<b>Nero Impala®, Paarl Grey,</b> <b>Zimbabwe Black</b>
PROJECT LOCATION	<b>JHI House</b> <b>11 Cradock Avenue, Rosebank,</b> <b>Johannesburg, South Africa</b>
MATERIAL/S	<b>South West African Marble, Verdefontein</b>
PROJECT LOCATION	<b>Natal Building Society</b> <b>303 West Street,</b> <b>Durban, South Africa</b>
MATERIAL/S	<b>Giallo Duna</b>
PROJECT LOCATION	<b>Safmarine Head Office</b> <b>22 Riebeek Street,</b> <b>Cape Town, South Africa</b>
MATERIAL/S	<b>Nero Impala®, Rosa Duna</b>
PROJECT LOCATION	<b>Surrey House</b> <b>35 Rissik Street,</b> <b>Johannesburg, South Africa</b>
MATERIAL/S	<b>Belfast Black, Nero Impala®, Verde Mare</b>
PROJECT LOCATION	<b>The Palace Hotel</b> <b>Lost City, Pilanesberg, South Africa</b>
MATERIAL/S	<b>Crema Valencia, Rosso Verona</b>

PROJECT LOCATION	<b>85 on Field</b> <b>85 Field Street,</b> <b>Durban, South Africa</b>
MATERIAL/S	<b>Belfast Black, Paarl Grey</b>
PROJECT LOCATION	<b>Anglo American Head Office</b> <b>55 Marshall Street,</b> <b>Johannesburg, South Africa</b>
MATERIAL/S	<b>Golden Dawn Sandstone,</b> <b>South West African Marble, Verde Mare</b>
PROJECT LOCATION	<b>Private Residence</b> <b>Pretoria, South Africa</b>
MATERIAL/S	<b>Golden Dawn Sandstone</b>
PROJECT LOCATION	<b>Sable Place</b> <b>1A Stan Road, Sandton,</b> <b>Johannesburg, South Africa</b>
MATERIAL/S	<b>Travertine, Verdefontein</b>
PROJECT LOCATION	<b>United States Embassy</b> <b>877 Pretorius Street,</b> <b>Pretoria, South Africa</b>
MATERIAL/S	<b>Nero Impala®, Rosso Gamma</b>
PROJECT LOCATION	<b>Victoria Maine</b> <b>71 Victoria Embankment,</b> <b>Durban, South Africa</b>
MATERIAL/S	<b>African Red</b>
PROJECT LOCATION	<b>Bank City</b> <b>Simmonds Street,</b> <b>Johannesburg, South Africa</b>
MATERIAL/S	<b>Nero Impala®, Paarl Grey</b>
PROJECT LOCATION	<b>Bank City – Blocks A, B, C &amp; E</b> <b>Simmonds Street,</b> <b>Johannesburg, South Africa</b>
MATERIAL/S	<b>Bianco Carrara, Nero Impala®,</b> <b>Paarl Grey</b>
PROJECT LOCATION	<b>Botsalano House</b> <b>Main Mall,</b> <b>Gaborone, Botswana</b>
MATERIAL/S	<b>Nero Impala®</b>
PROJECT LOCATION	<b>Farringdon Court</b> <b>Farringdon Road,</b> <b>London, England</b>
MATERIAL/S	<b>African Red, Paarl Grey</b>
PROJECT LOCATION	<b>Lansdowne House</b> <b>Lansdowne Road,</b> <b>Croydon, England</b>
MATERIAL/S	<b>Paarl Grey, Rosa Duna</b>
PROJECT LOCATION	<b>South African Reserve Bank</b> <b>8 Commercial Road,</b> <b>Durban, South Africa</b>
MATERIAL/S	<b>Paarl Grey, Rosa Porrino</b>
PROJECT LOCATION	<b>9 Marylebone Lane</b> <b>London, England</b>
MATERIAL/S	<b>Belfast Black, Giallo Duna</b>
PROJECT LOCATION	<b>Old Mutual Centre</b> <b>35 Pritchard Street,</b> <b>Johannesburg, South Africa</b>
MATERIAL/S	<b>African Red</b>



PROJECT LOCATION	<b>South Quay Plaza Marsh Wall, Docklands, London, England</b>
MATERIAL/S	<b>Nero Impala®, Paarl Grey, Zimbabwe Black</b>
PROJECT LOCATION	<b>Southern Life Centre 8 Riebeek Street, Cape Town, South Africa</b>
MATERIAL/S	<b>South West African Marble</b>
PROJECT LOCATION	<b>Standard Bank Administration Centre 5 Simmonds Street, Johannesburg, South Africa</b>
MATERIAL/S	<b>Belfast Black, Paarl Grey</b>
PROJECT LOCATION MATERIAL/S	<b>Standard Bank Centre Heerengracht, Cape Town, South Africa African Red</b>
PROJECT LOCATION	<b>Whitefriars Fleet Street, London, England</b>
MATERIAL/S	<b>Monderiz, Nero Impala®</b>
PROJECT LOCATION	<b>Cradock Place 10 Arnold Road, Rosebank, Johannesburg, South Africa</b>
MATERIAL/S	<b>Balmoral Red, Botticino Classico</b>
PROJECT LOCATION	<b>South African Reserve Bank 370 Church Street, Pretoria, South Africa</b>
MATERIAL/S	<b>Belfast Black</b>
PROJECT LOCATION	<b>Land Bank 192 Visagie Street, Pretoria, South Africa</b>
MATERIAL/S	<b>Nero Impala®</b>
PROJECT LOCATION	<b>Liberty Life 66 Jorissen Street, Braamfontein, Johannesburg, South Africa</b>
MATERIAL/S	<b>Tropical Sun</b>
PROJECT LOCATION MATERIAL/S	<b>OK Bazaars Pretoria, South Africa Nero Impala®, Parys</b>
PROJECT LOCATION	<b>Parliament Buildings Parliament Street, Cape Town, South Africa</b>
MATERIAL/S	<b>Golden Dawn Sandstone, Paarl Grey</b>
PROJECT LOCATION	<b>1066 Building 35 Prichard Street, Johannesburg, South Africa</b>
MATERIAL/S	<b>African Red</b>
PROJECT LOCATION MATERIAL/S	<b>Mobil House Cape Town, South Africa Balmoral Red</b>
PROJECT LOCATION	<b>Tiger Oats Cnr Gwen Lane and Fredman Drive, Sandton, Johannesburg, South Africa</b>
MATERIAL/S	<b>Balmoral Red, Rosa Porrino</b>
PROJECT LOCATION	<b>Post Office 280 Smit Street, Joubert Park, Johannesburg, South Africa</b>
MATERIAL/S	<b>Nero Impala®</b>

PROJECT LOCATION	<b>Sanlam Towers 208-212 Jeppe Street, Johannesburg, South Africa</b>
MATERIAL/S	<b>Bianco Carrara</b>
PROJECT LOCATION	<b>Sandton Sun Hotel 5th Street, Sandton, Johannesburg, South Africa</b>
MATERIAL/S	<b>African Red, Calacatta</b>
PROJECT LOCATION	<b>Cape Sun Hotel Strand Street, Cape Town, South Africa</b>
MATERIAL/S	<b>Rosa Aurora, Serpeggiante, Travertine, Verde Guatemala</b>
PROJECT LOCATION MATERIAL/S	<b>Cascades Hotel Sun City, Pilanesburg, South Africa Rosso Verona</b>
PROJECT LOCATION MATERIAL/S	<b>Corpus Christi Building Corpus Christi, Texas, USA Nero Impala®</b>
PROJECT LOCATION	<b>Warner Centre Plaza 21650 Oxnard Street, Canoga Park, Los Angeles, USA</b>
MATERIAL/S	<b>Nero Impala®</b>
PROJECT LOCATION MATERIAL/S	<b>Fountain Houston, USA Nero Impala®</b>
PROJECT LOCATION	<b>Opera House 320 Pretorius Street, Pretoria, South Africa</b>
MATERIAL/S	<b>Paarl Grey</b>
PROJECT LOCATION	<b>President Place Jan Smuts Avenue, Rosebank, Johannesburg, South Africa</b>
MATERIAL/S	<b>Balmoral Red, Belfast Black</b>
PROJECT LOCATION	<b>Nedbank 100 Main Street, Johannesburg, South Africa</b>
MATERIAL/S	<b>Travertine</b>
PROJECT LOCATION	<b>ABSA 88 Main Street, Johannesburg, South Africa</b>
MATERIAL/S	<b>Tropical Sun</b>
PROJECT LOCATION	<b>Supreme Court 2 Bird Street Central, Port Elizabeth, South Africa</b>
MATERIAL/S	<b>Namaqua Fantasia, Nero Impala®</b>
PROJECT LOCATION	<b>Civitas Building Cnr Andries and Struben Streets, Pretoria, South Africa</b>
MATERIAL/S	<b>Namaqualand Onyx, Nero Impala®</b>
PROJECT LOCATION	<b>Department of Interior 77 Harrison Street, Johannesburg, South Africa</b>
MATERIAL/S	<b>Nero Impala®</b>





**MINACO (PTY) LTD**

4A Millward Road  
Maraisburg  
1710  
South Africa

P.O. Box 14  
Maraisburg  
1700  
South Africa

Tel: + 27 11 858 2900  
Fax: + 27 11 672 6862  
Email: [contracts@minaco.com](mailto:contracts@minaco.com)  
Website: [www.minaco.com](http://www.minaco.com)